

Keyhole Piano Hovering Insert Installation Brief

Instructions for installing the Keyhole hovering panel into a compatible piano shell.

Tools Needed

Required tools - 1/4" hex head driver

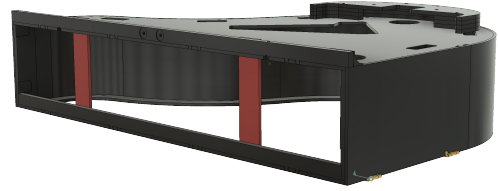


Recommended tools (nutdriver above not necessary with these tools) - drill driver, 1/4" extension rod, 1/4" hex bit



Instructions

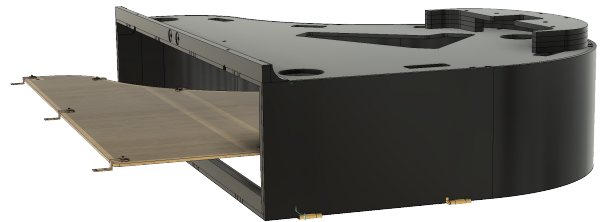
Note on 50-inch and larger models: you may need to remove the upright supports to allow the panel to fit/slide into the opening on the front of the piano



Prepare the panel by attaching the hardware as shown.



With the piano carefully positioned upside down as shown [and with the sides open if TurnKey], slide the panel into position. The insert is the same size as the rim opening, so line up the panel to match.



Use [the supplied] $\frac{3}{8}$ " long hex head screws to anchor each bracket to the rim.

